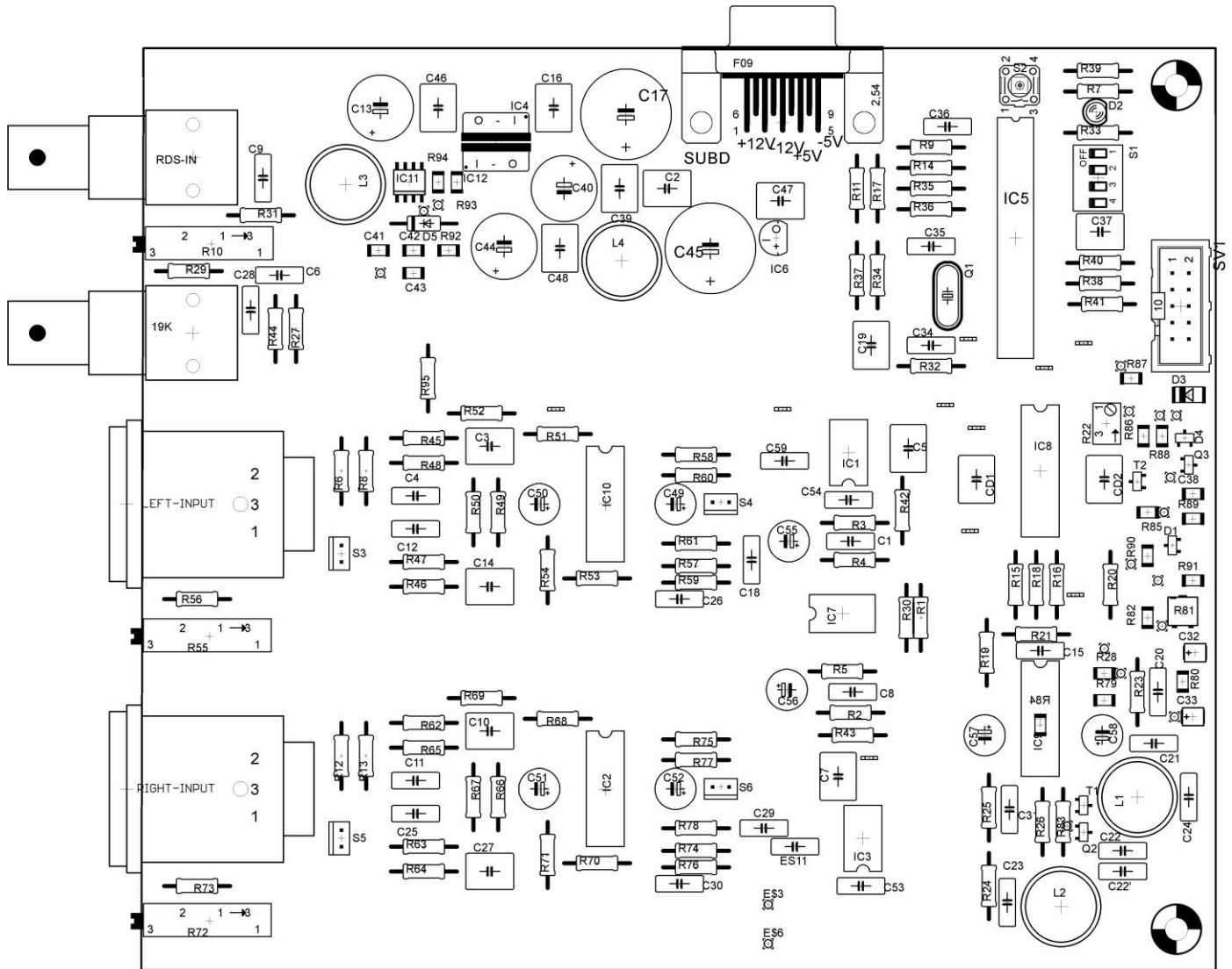


Dossier de réalisation codeur stéréo 8X PRO (01/08/2022)

<http://radioinitiation.chez-alice.fr>

1) Implantation : <http://radioinitiation.chez-alice.fr>



Liste de composant Codeur Stéréo 8X PRO

<http://radioinitiation.chez-alice.fr>

1) Résistances :

R1, R87 =2.2K Ω
R2, R3=10 Ω
R4, R5, R37=5.6K Ω
R6, R12, R34=680 Ω
R7=100 K Ω
R8, R13, R16, R25, R28, R79, R84=10K Ω
R11, R86 =47K Ω
R14, R21, R31=3.3K Ω
R15, R35, R94=24K Ω
R17=120 K Ω
R18, R89 =1M Ω
R19=5.1K Ω
R20 =6.8K Ω
R22 =22K Ω ajustable
R23, R38, R39, R40, R41, R83 =100 Ω
R24=3.6K Ω
R26, R42, R43, R51, R52, R53, R54=4.7K Ω
R68, R69, R70, R71, R92=4.7K Ω
R27 =33K Ω
R29=390 Ω
R30, R44, R58, R75=12K Ω
R36=4.3K Ω
R10=1K Ω ajustable
R45, R46, R47, R48, R62, R63, R64, R65, R93=2.7K Ω
R49, R50, R66, R67=220 K Ω
R55, R72=4.7K Ω ajustable
R56, R73=1.5K Ω
R57, R74=22K Ω
R59, R76=680K Ω
R60, R77=150K Ω
R61, R78=820 Ω
R80=8.2K Ω
R81/R82=NC
R85=220 K Ω
R88=39 K Ω
R90=33 Ω
R91=330 K Ω
R9, R32, R33=1K Ω

3) Selfs :

L1=3.9mH
L2=4.7mH
L3=33 μ H
L4=100 μ H

2) Condensateurs

C1, C8 =27pF
C3, C10, C14, C27, C38 =470nF/63V
C4, C11, C12, C25 =100pF
C5, C7, C19 =2.2 μ F/63V polyester
C34, C35 =22pF
C9=47nF/63V polyester
C13=330 μ F/25V
C15, C28, C31=15pF
C37, C47=220nF/63V
C17, C45=470 μ F/35V
C18, C29=2.2nF/63V
C20, C36, C39, C53, C54, C59=100nF/63V
C21, C22*2, C23=330pF
C24=150pF
C26, C30=47pF
C2, C16, C32, C33, C46, C48=1 μ F/63V
C40, C44=100 μ F/25V
C41, C42=47nF (1206)
C43=220pF
C6, C49, C50, C51, C52, C55, 56=10 μ F/25V
C57, C58=10 μ F/25V

4)Diodes

D1=BAV99
D2=Led 3mm
D3=Zener 3.9V
D4=BAS70
D5=MBRA160T3

Liste de composant Codeur Stéréo 8X PRO

(<http://radioinitiation.chez-alice.fr>)

5) Régulateurs et Circuits Intégré:

IC4=7812
IC5=ATM8
IC6=79L05
IC8=ATM8
IC12=7805

IC1, IC3=MAX297
IC2, IC9, IC10=LF347N
IC7=NE5532
IC11=L5970D

6) Transistors et Quartz:

Quartz : 15.2MHz
T1, T2=BC817
Q2, Q3=BC807

7) Divers:

S1=Dip 4 Switch
S2=Micro switch
S3 à S6=Dip 1 Switch
SV1=HE10

X1=SubD 9pts
X2, X3=BNC 50 ohms
J1, J2= XLR